

Tudor Downpipes Installation Guide

Gutter outlet / Hopper connection

Connection to the gutter outlet and or hopper is made via a pipe socket. Pipe sockets are supplied with all offsets. Bespoke offsets can be made to order.

Fixing

For fixing to masonry via the cast sockets, use Alutec No. 16 x 70mm hex insert domehead, code SC208 with appropriate wall plugs. Intermediate pipe clips are not required. However, additional pipe clips must be fitted adjacent to inline bends and branches.

Downpipes can be spaced out a further 30mm from the wall by using Alutec Wall spacer, code SC712 with Alutec No. 16 x 100mm hex insert domehead, code SC209 with appropriate wall plugs.

If fixing to a non masonry background, please call Alutec Technical Services Department for advice.

Jointing

Joint sealing must not be carried out in wet weather or in temperatures below 5°C or above 40°C. Joint surfaces must be perfectly clean and dry. Use a clean cloth and Alutec solvent cleaner, code SC108 to remove all traces of dirt or grease, which may not be visible.

All pipe joints, including connection to the gutter outlet, must be sealed with Alutec sealant, code SC101. Ensure to allow a 3-4mm expansion gap between pipe lengths.

Pipe off-cuts can be used by fitting a pipe socket into a square cut end of pipe.

Drain Connection

Unless a shoe is used to terminate the pipe and discharge over an open gully, drain connections should preferably be made using the appropriate adaptor by the drainpipe manufacturer, e.g. connect to vitreous clay or PVCu drainage pipes with a universal EPDM rubber adaptor. For connection to cast iron drainage use a proprietary cast iron step coupling.

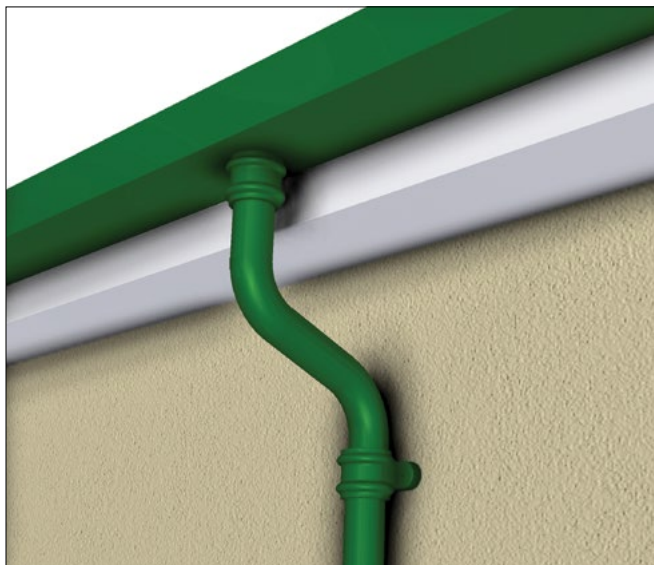
Testing

It is good practice to water test the downpipes after installation. If connected to a gutter system, the discharging of flood test water from the gutter should identify any leaks within the downpipe system. For downpipes connected to hoppers or flat roof outlets, discharging water at the top with a hose pipe for a period of 5 minutes under normal mains pressure should suffice. Any leaking joints should be taken apart and re-sealed and re-tested.

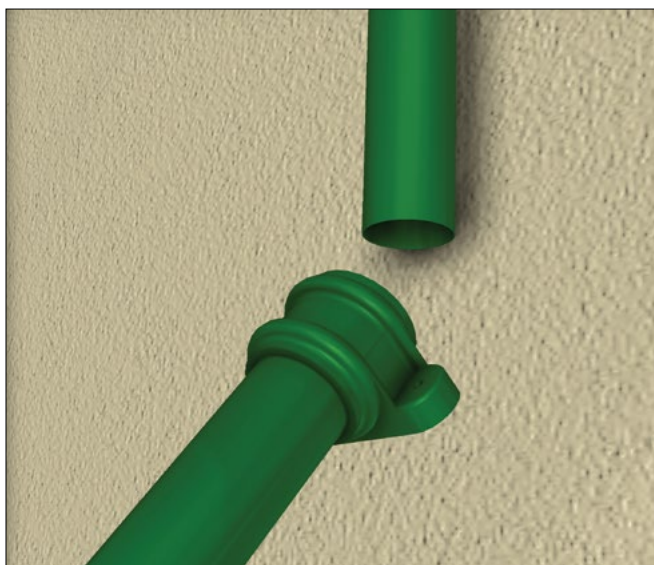
Lightning conductors

Under no circumstances should rainwater downpipes be used as a lightning conductor to earth. If pipes are to be bonded to a lightning conductor system, the specialist installer must use an electrolytically compatible external bonding strap and not drill and bolt through the pipe wall.

Gutter outlet / Hopper connection



Fixing



Drain Connection

