

Installation Guidance

Gutter outlet / Hopper connection

Connection to the gutter outlet and or hopper is made via a pipe socket. Pipe sockets are supplied with all offsets. Bespoke offsets can be made to order.

Fixing

Traditional downpipes with eared cast sockets

For fixing to masonry via the cast sockets, use Alutec No. 16 x 70mm hex insert domehead, code SC208 with appropriate wall plugs. When fixed in this way, intermediate pipe clips are not required. However, additional pipe clips must be fitted adjacent to inline bends and branches.

Traditional downpipes with non eared cast sockets

For fixing to masonry, use the standard pipe clips and fix with Alutec No. 16 x 70mm hex insert domehead, code SC208 with appropriate wall plugs. One clip to be located directly under the pipe socket and a further clip 1.5 metres below. Additional pipe clips must be fitted adjacent to inline bends and branches.

Additional spacing from wall

Downpipes can be spaced out a further 30mm from the wall by using Alutec cast spacer bobbins with No. 16 x 100mm hex insert domehead, code SC209 with appropriate wall plugs.

If fixing to a non masonry background, please call Alutec Technical Services Department for advice.

Jointing

Joint sealing must not be carried out in wet weather or in temperatures below 5°C or above 40°C. Joint surfaces must be perfectly clean and dry. Use a clean cloth and Alutec solvent cleaner, code SC108 to remove all traces of dirt or grease, which may not be visible.

All joints to pipes with cast sockets must be sealed, including at the gutter outlet with Alutec sealant, code SC101. First caulk the pipe socket with Alutec foam filler, code SC911 and then apply / point a bead of Alutec sealant. Ensure a 3-4mm expansion gap between pipe lengths.

Pipe cut offs can be utilised by fitting a pipe socket to a square cut end of pipe. Ensure that a bead of Alutec sealant, code SC101 is placed within the internal recess of the pipe socket, prior to driving the socket onto the end of the pipe with a rubber/wooden mallet.

Drain Connection

Unless a shoe is used to terminate the downpipe and discharge over an open gully, drain connections should preferably be made using an appropriate adaptor by the drain pipe manufacturer, e.g. connect to vitreous clay or PVCu drainage pipes with a universal EPDM rubber adaptor. For connection to cast iron drainage use a proprietary cast iron step coupling.

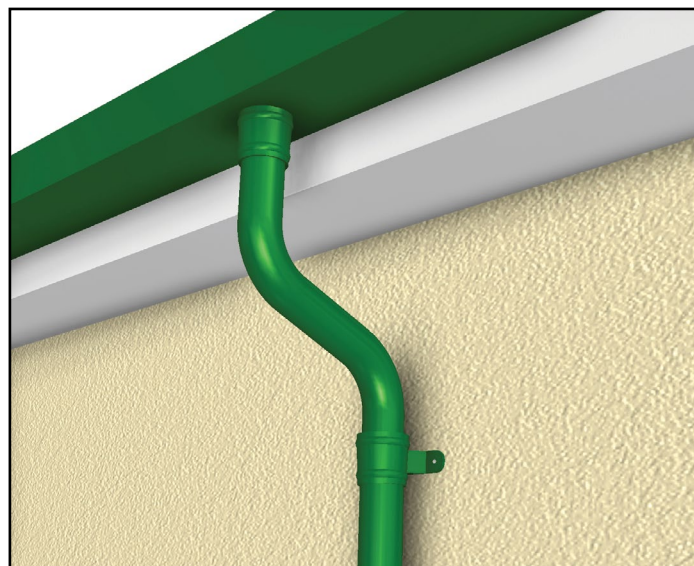
Testing

It is good practice to water test the downpipes after installation. If connected to a gutter system the discharging of flood test water from the gutter should identify any leaks within the downpipe system. For downpipes connected to hoppers or flat roof outlets, discharging water at the top with a hose pipe for a period of 5 minutes under normal mains pressure should suffice. Any leaking joints should be taken apart and re-sealed and re-tested.

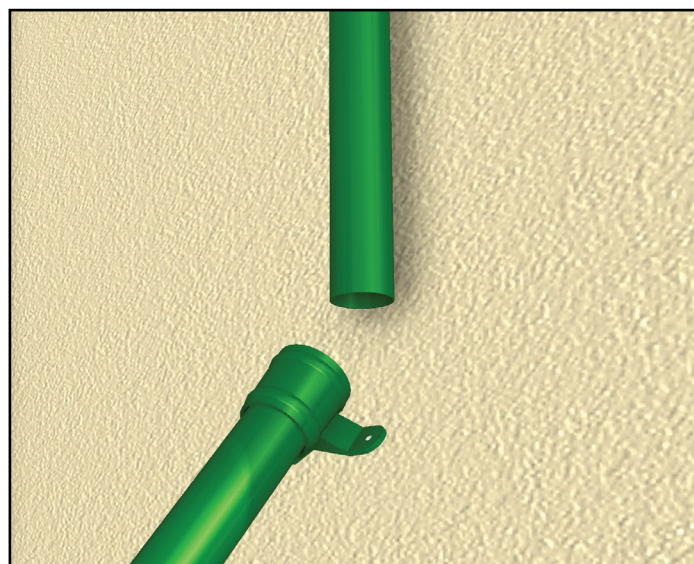
Lightning Conductors

Under no circumstances should rainwater downpipes be used as a lightning conductor to earth. If bonding pipes to a lightning conductor system is required, the specialist installer must use an electrolytically compatible external bonding strap and not drill and bolt through the pipe wall.

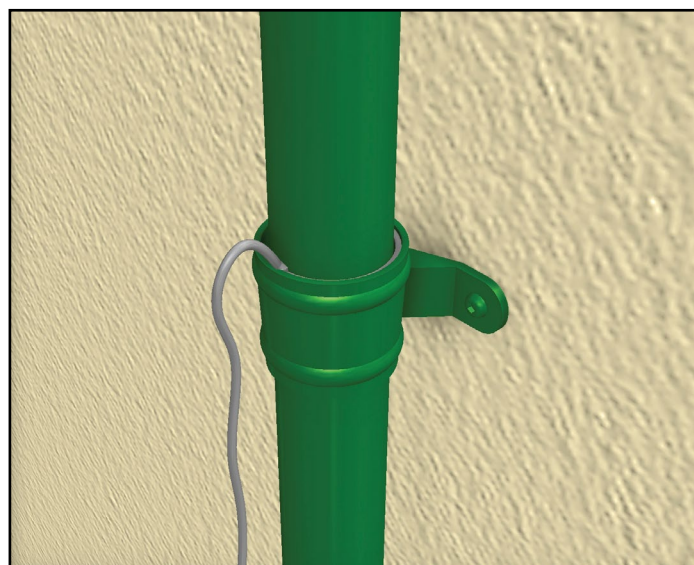
Gutter outlet / Hopper connection



Fixing



Jointing



Handling & Storage

Gutters and pipes, particularly with polyester powder coated finishes, should be handled with care and should preferably be stored under cover on racks to prevent scratching or denting. All gutter and pipe lengths are supplied in protective polythene sleeving and components packed in cardboard boxes.

If polyester powder coated products are stored outside, cover with a tarpaulin to guard against water ingress into the protective polythene tubing. If water becomes trapped within the polythene wrapping and left exposed to warm sunlight, it may leave permanent water stains on the paint finish. Mill finish goods to be installed in their natural state should also be stored undercover, to prevent uneven oxidation to visible surfaces. Once installed, the surfaces will mature uniformly. Sealants should not be stored in temperatures below 0°C and kept away from any direct heat source. Solvent cleaners must be stored away from any direct heat or combustible source, preferably in an appropriate fire resistant storage cabinet.

Environmental

Ensure all packaging is disposed of responsibly in accordance with current waste disposal regulations. Aluminium is an infinitely recyclable material and therefore all off cuts should be disposed of at metal recycling depots.

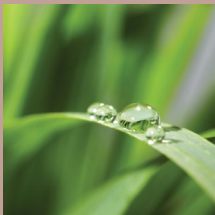
Safety

The relevant safety regulations are outlined in the Health and Safety at Work Act 1974 and should be followed.

Refer to the Approved Code of Practice (ACOP) Construction Design and Management Regulations 2007.

Handling mill finished or polyester powder coated aluminium products does not pose any known health hazard, however it is recommended to wear protective gloves when handling mill finish aluminium.

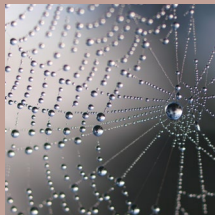
Hazard instructions relating to sealant, solvent cleaner and touch up paint are printed on their respective containers and Coshh sheets are supplied with each consignment of goods and are available on request.



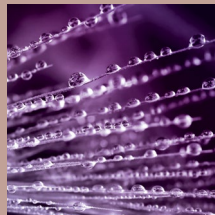
evolve RAINWATER SYSTEMS



traditional RAINWATER SYSTEMS



aligator RAINWATER SYSTEMS



evoke FASCIA AND SOFFIT



roof OUTLET SYSTEMS



shower OUTLET SYSTEMS

ALUTEC
ALUMINIUM RAINWATER SYSTEMS

Head office

For general enquiries, please call **01234 359438**

For technical enquiries please call **01234 344108**

email: enquiries@marleyalutec.co.uk

Fax: **01234 357199**

Unit 1 (G-H), Viking Industrial Park, Hudson Road, Elms Farm Industrial Estate, Bedford MK41 0LZ

Export Division

Aliaxis UK

Lenham, Kent, ME17 2DE

Telephone: **01622 858888** Fax: **01622 850778**



/marleyalutec

@marleyalutec

/company/marleyalutec

marleyalutec.co.uk

an Aliaxis company